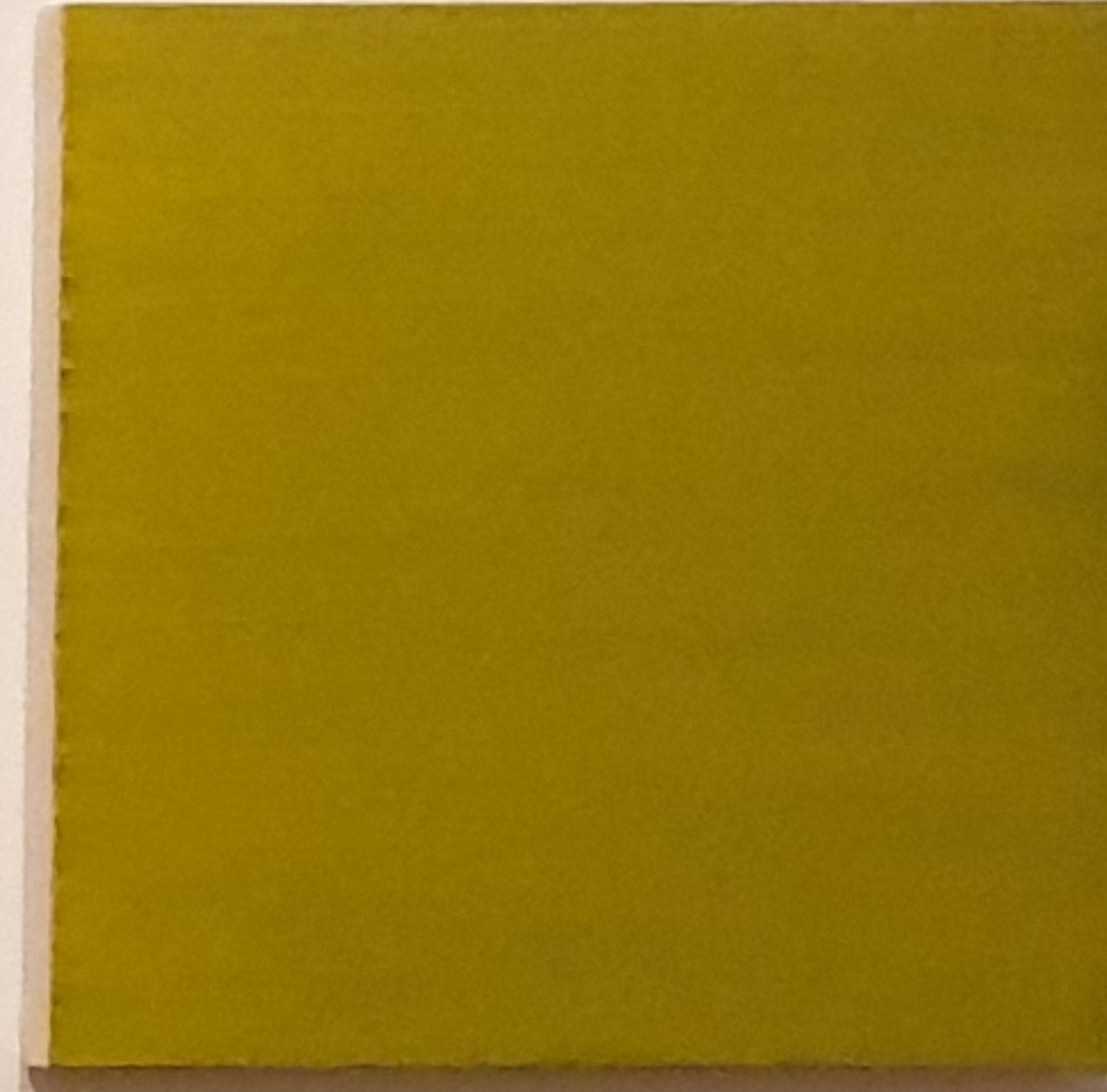
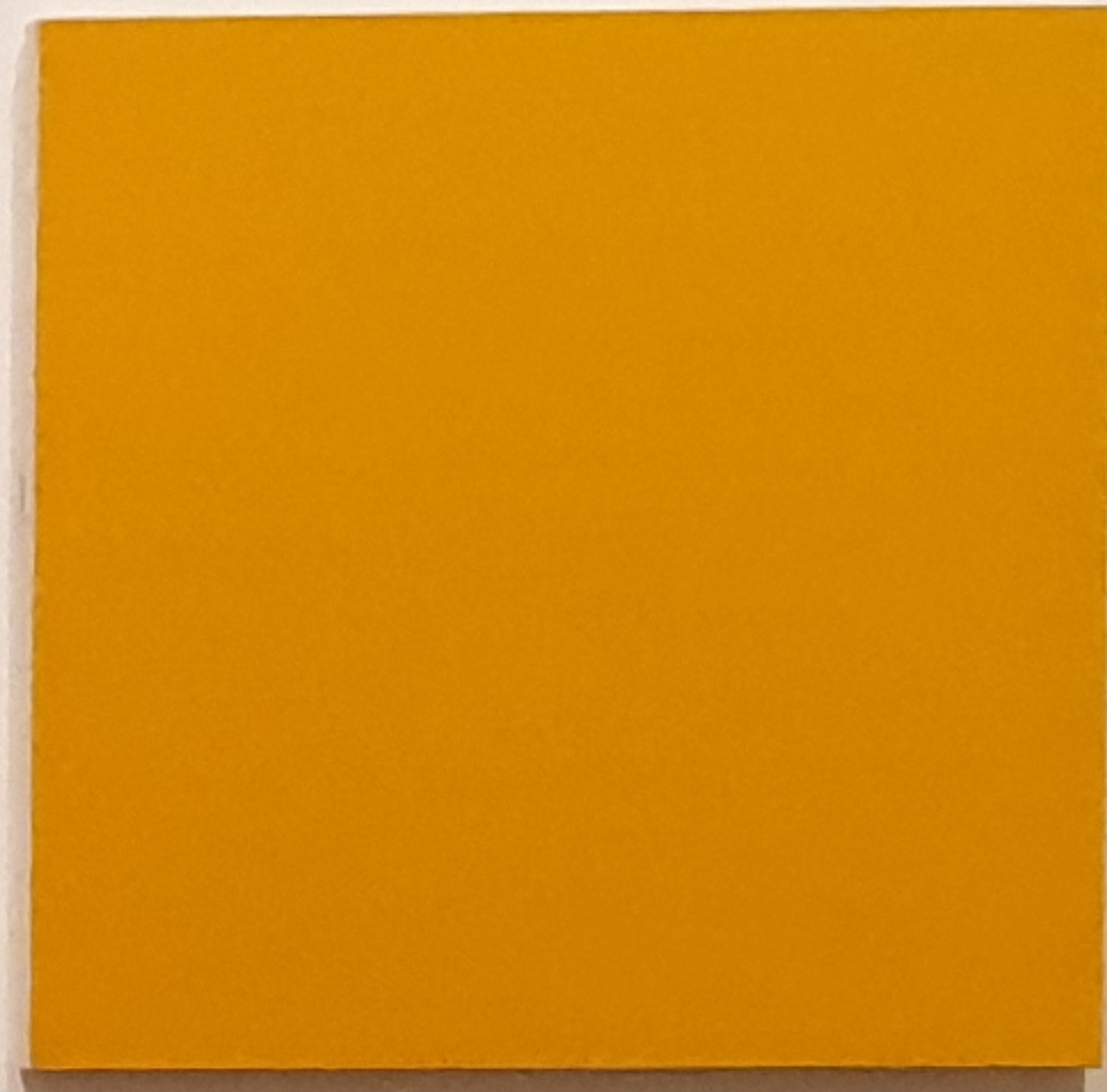
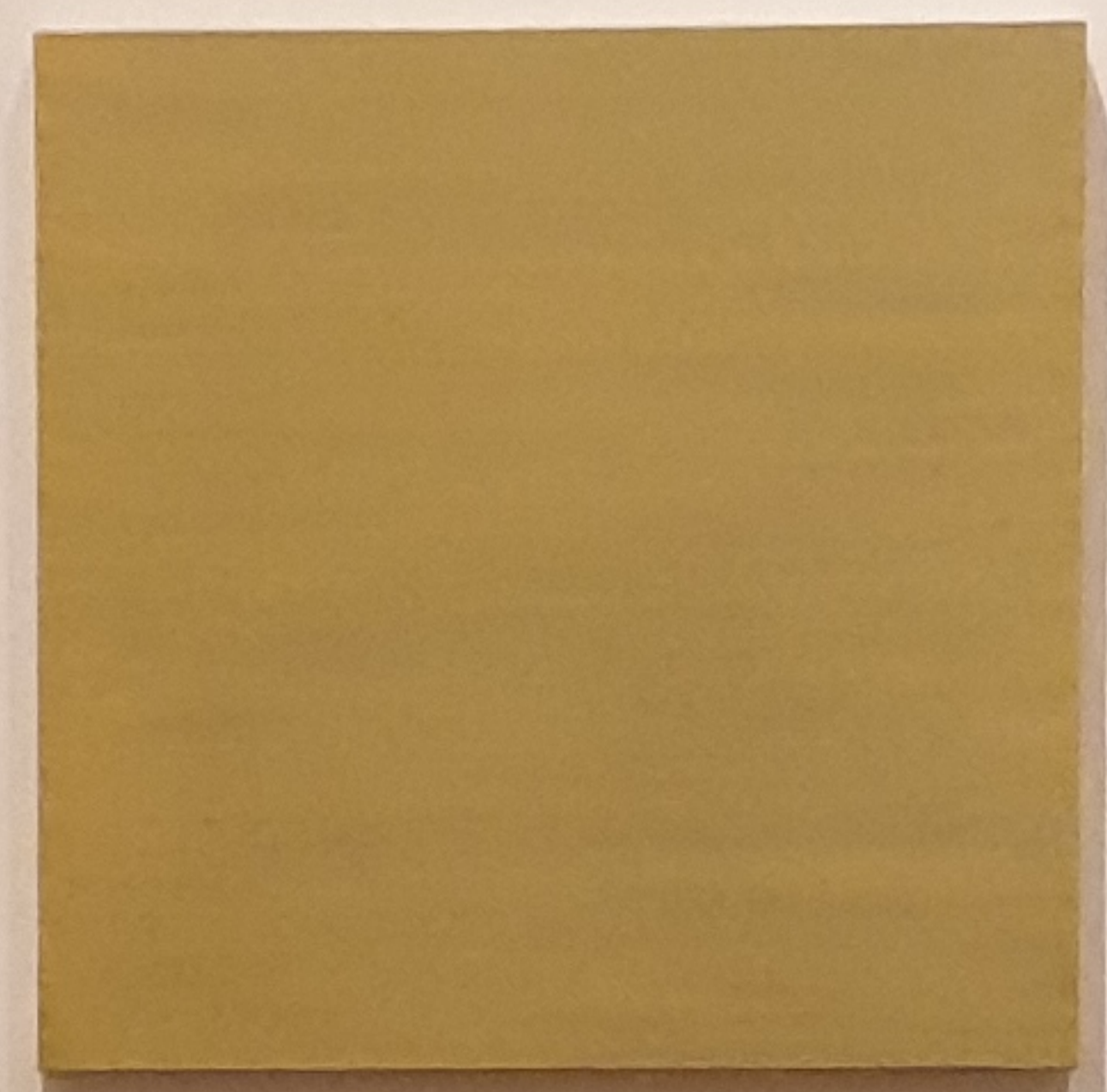
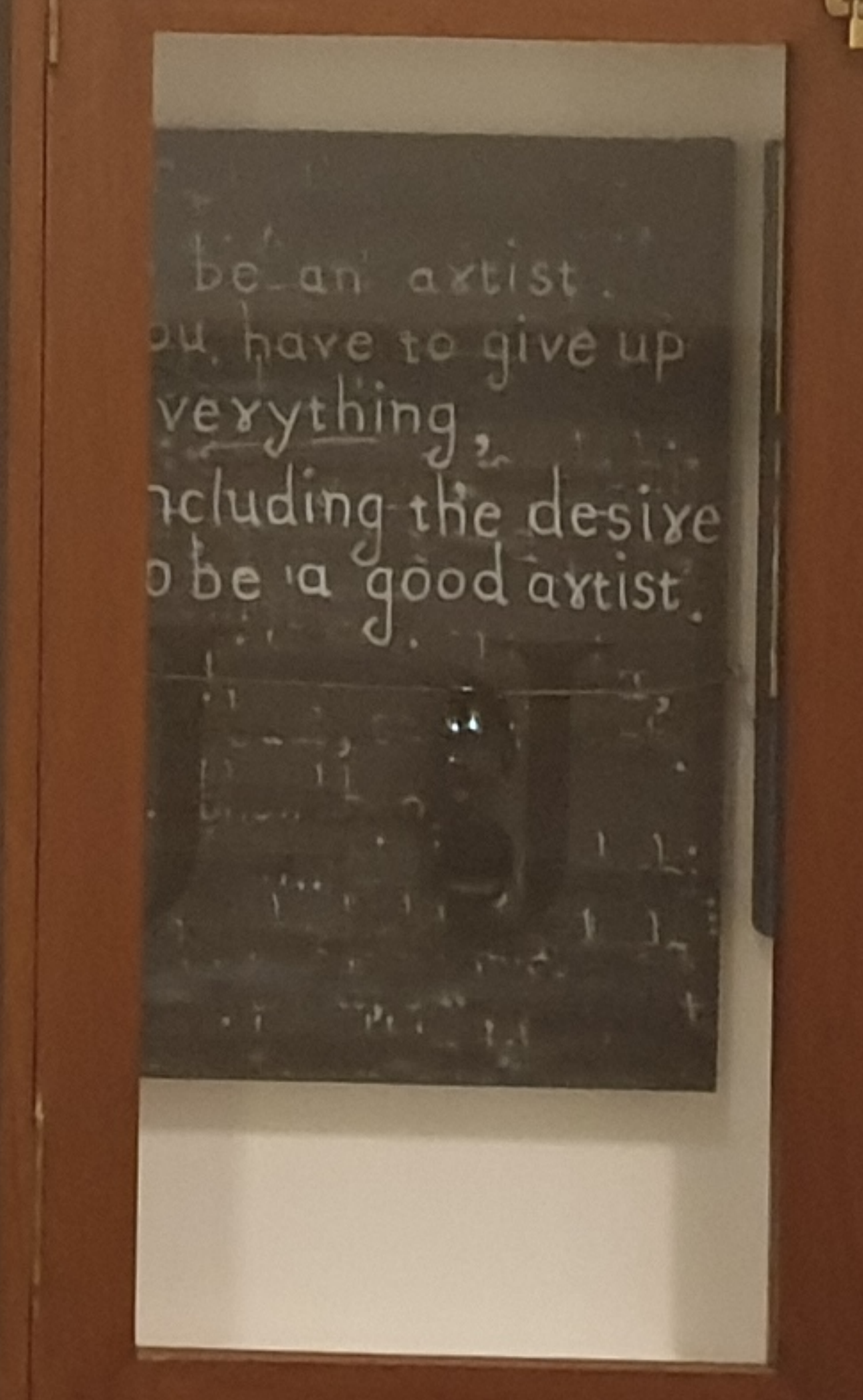
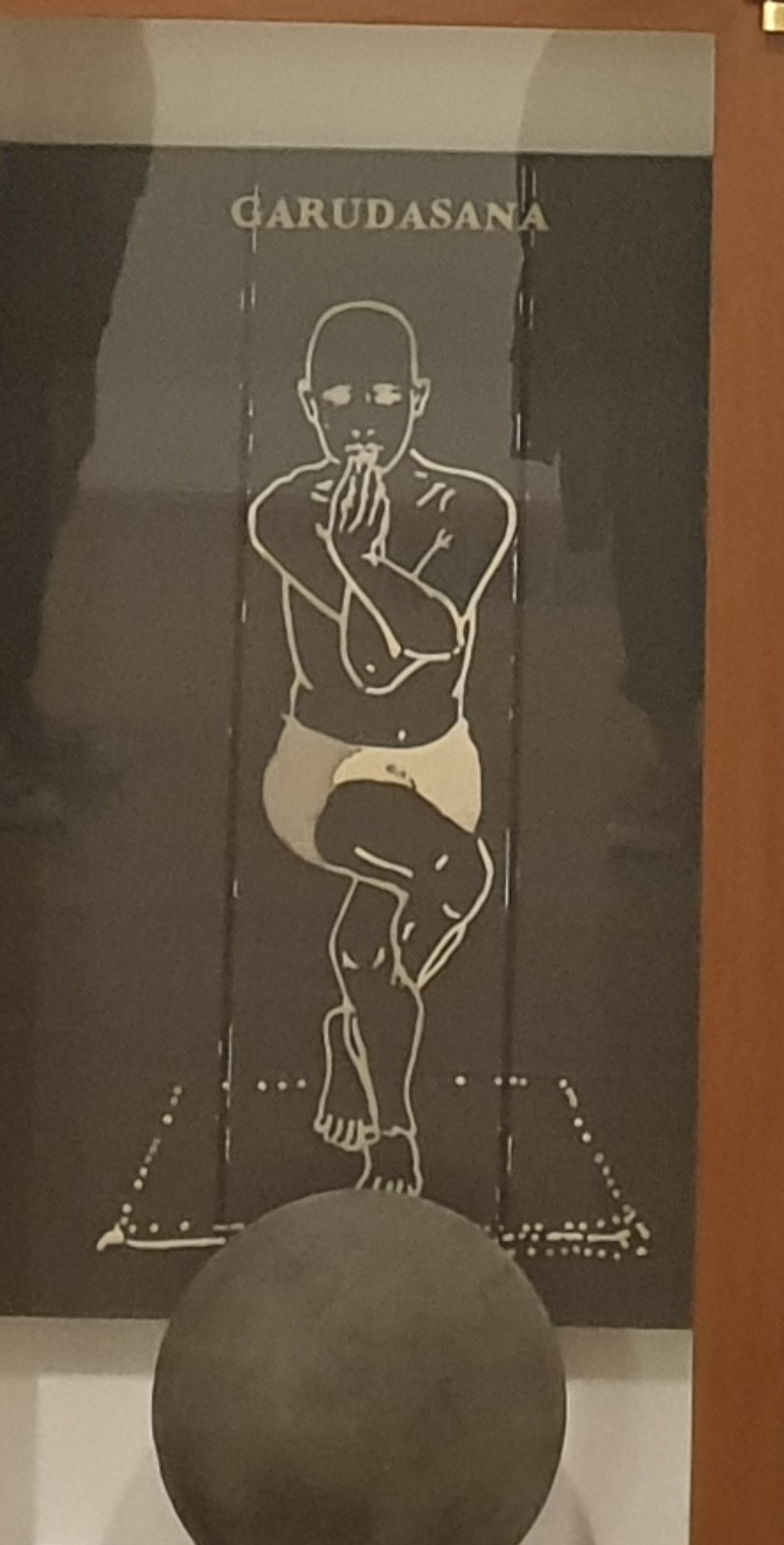
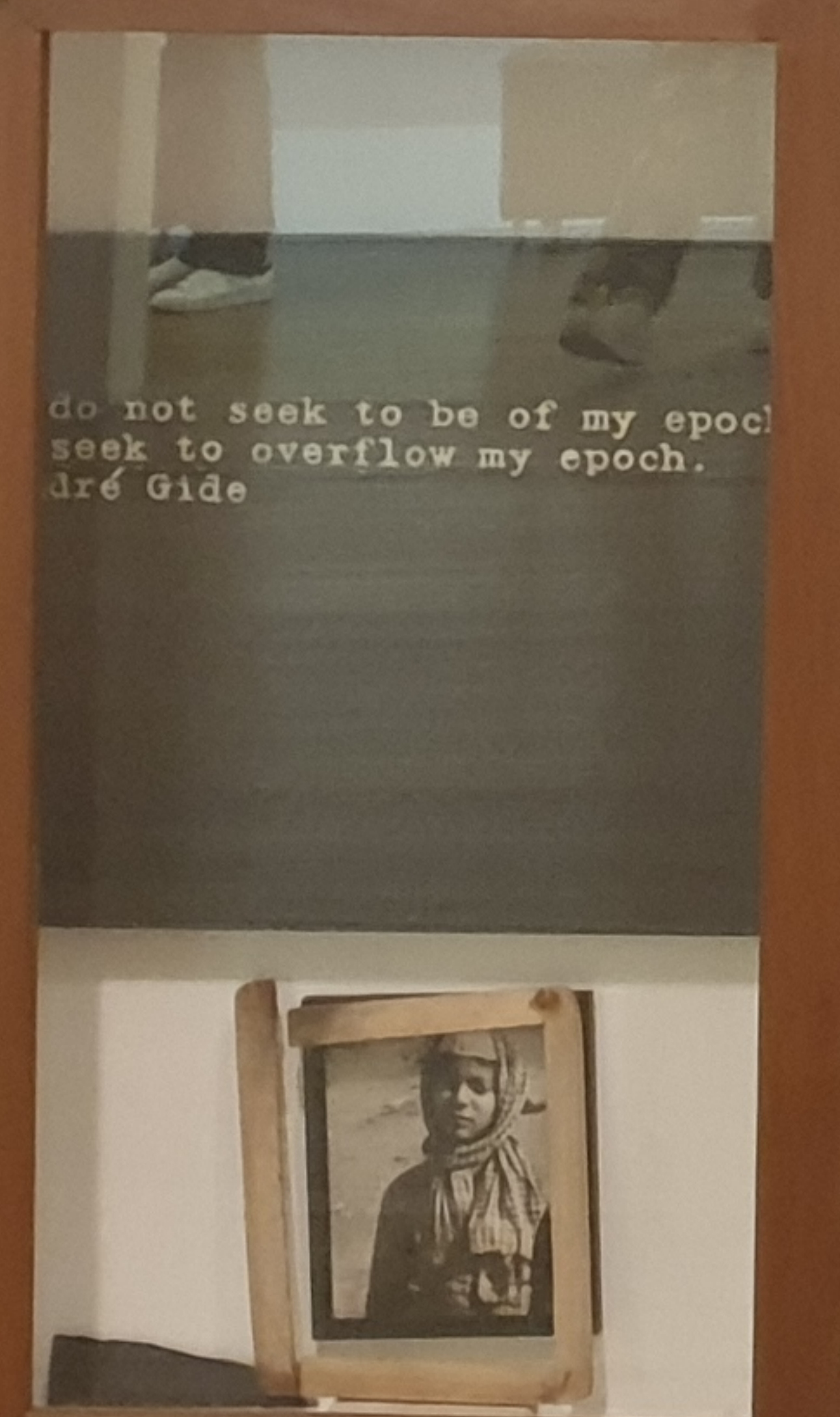
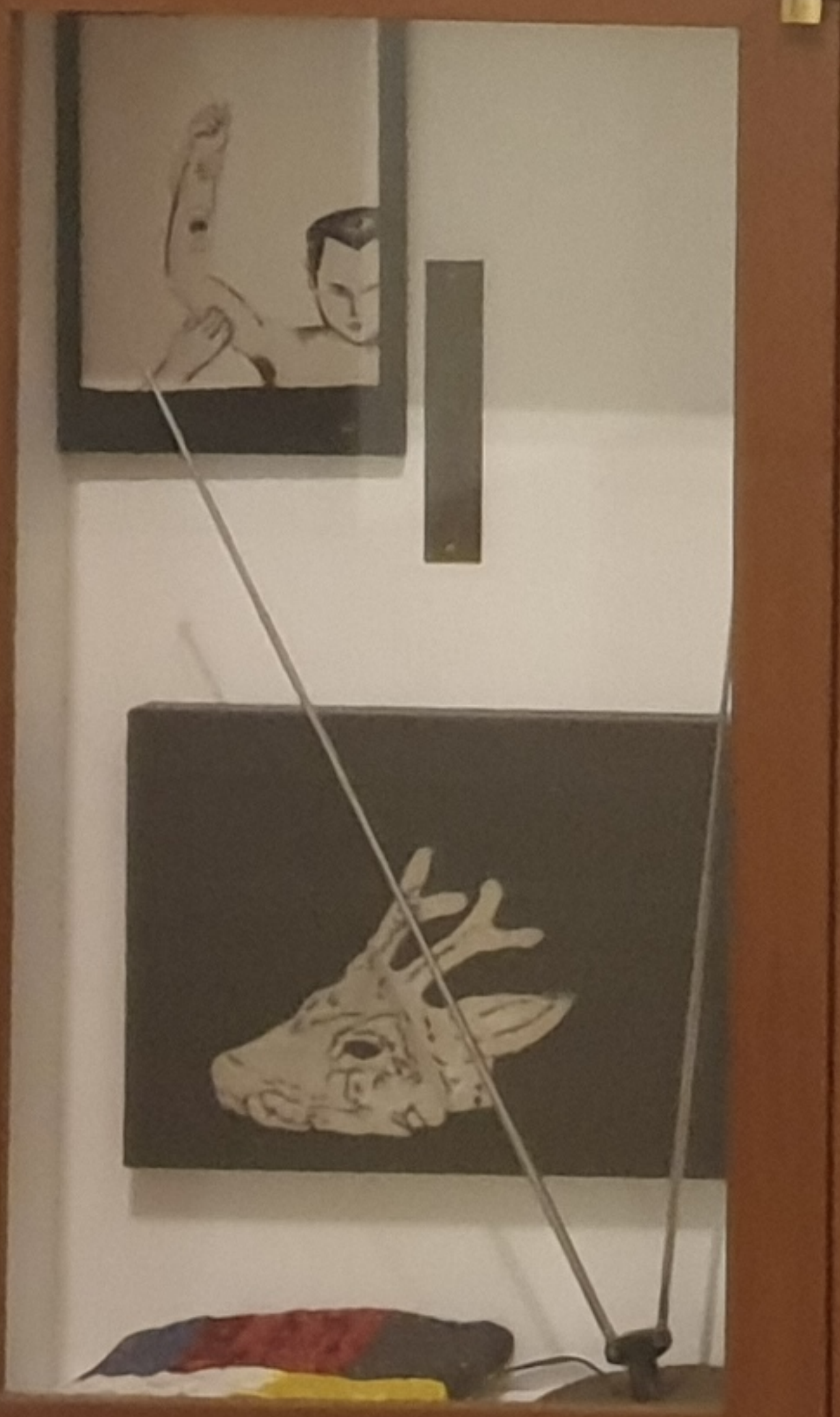
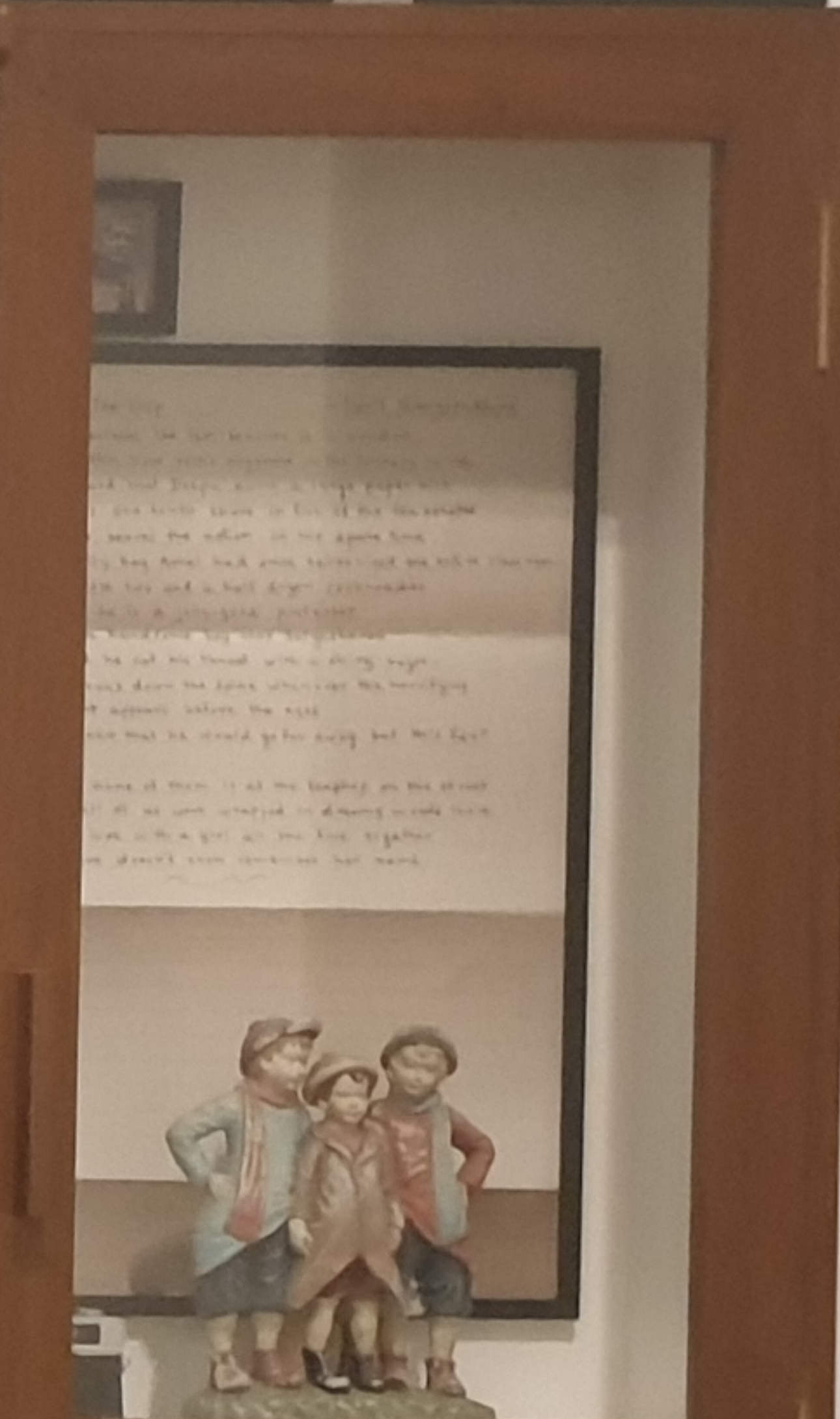
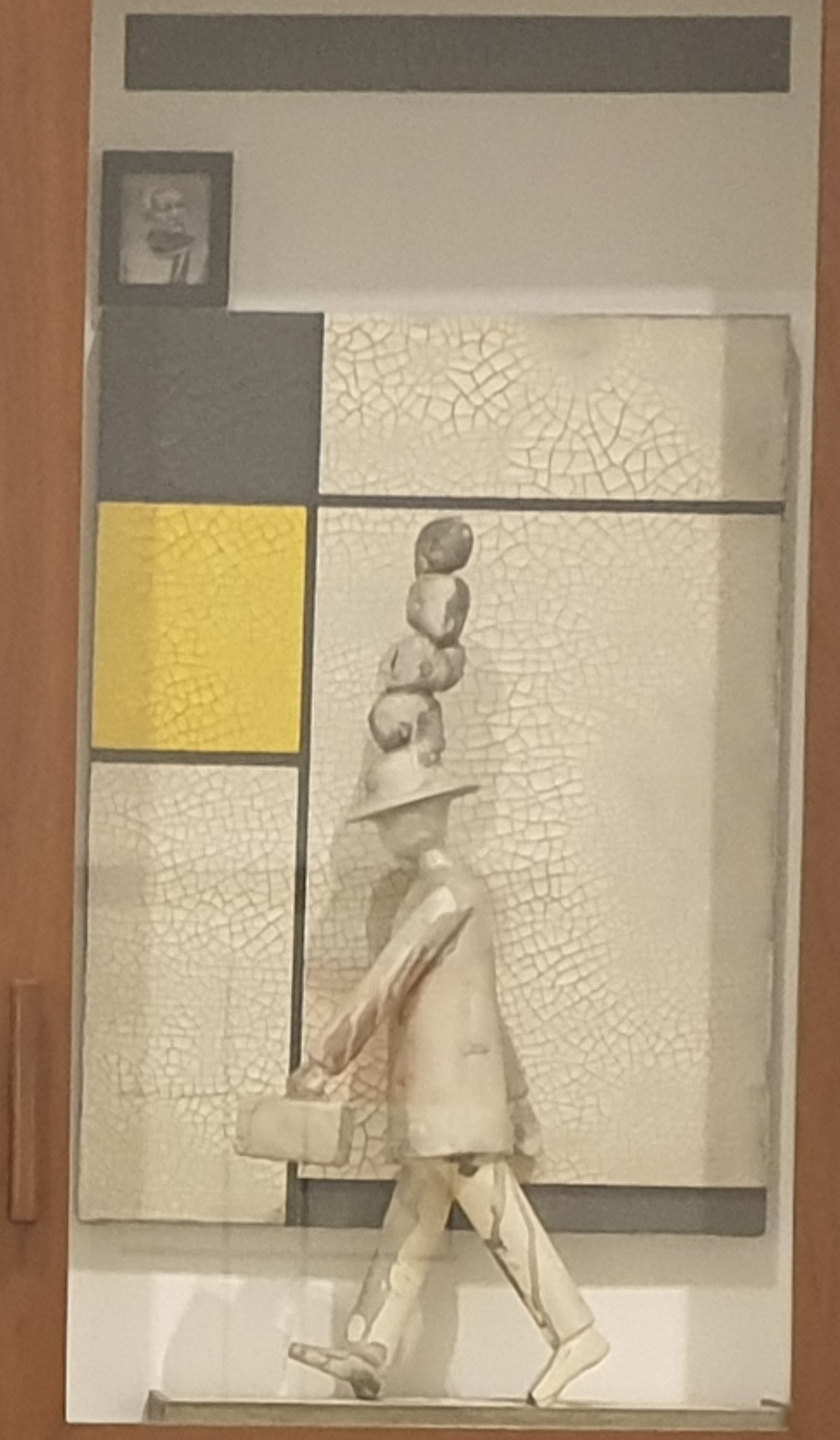
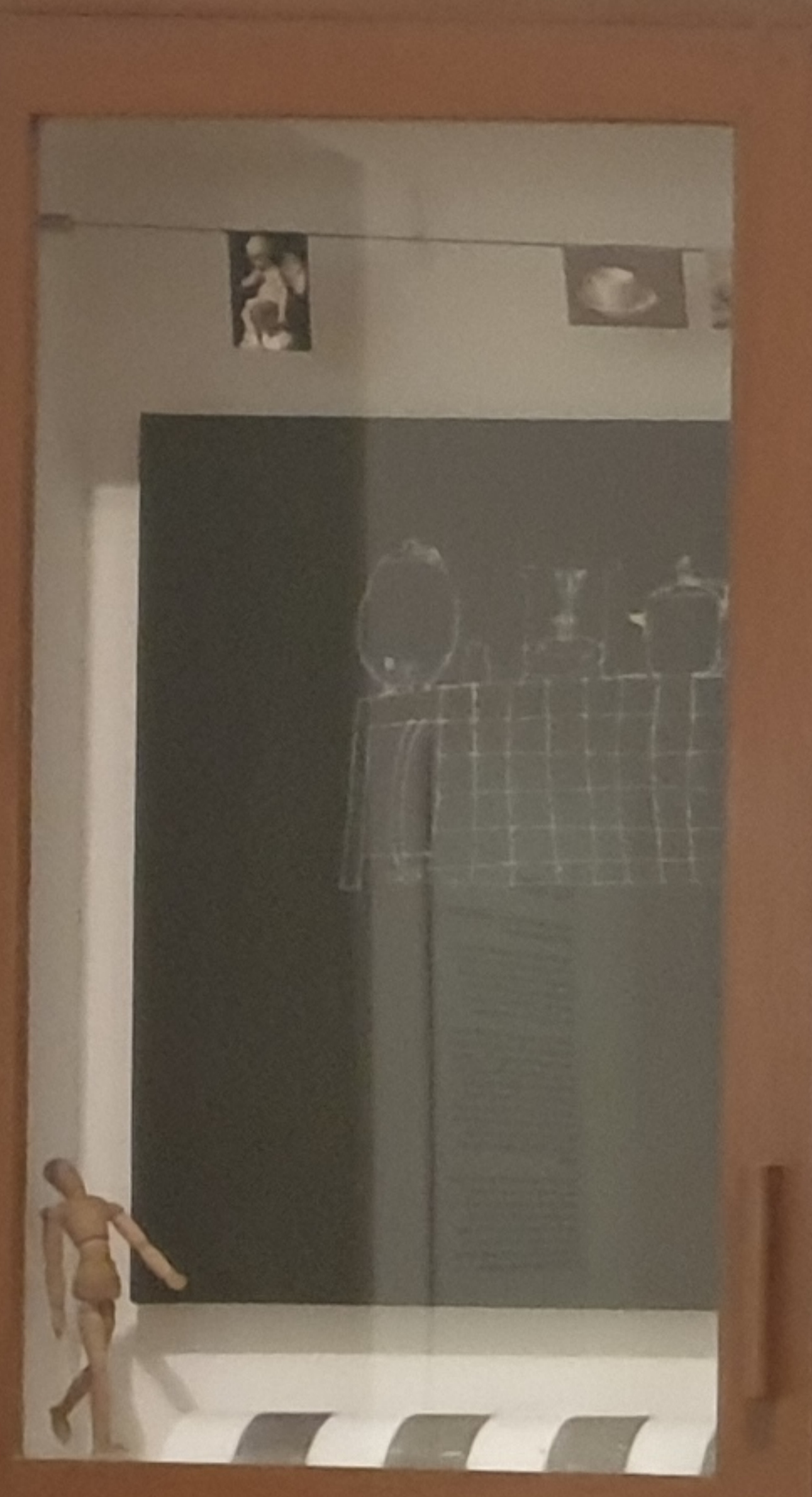
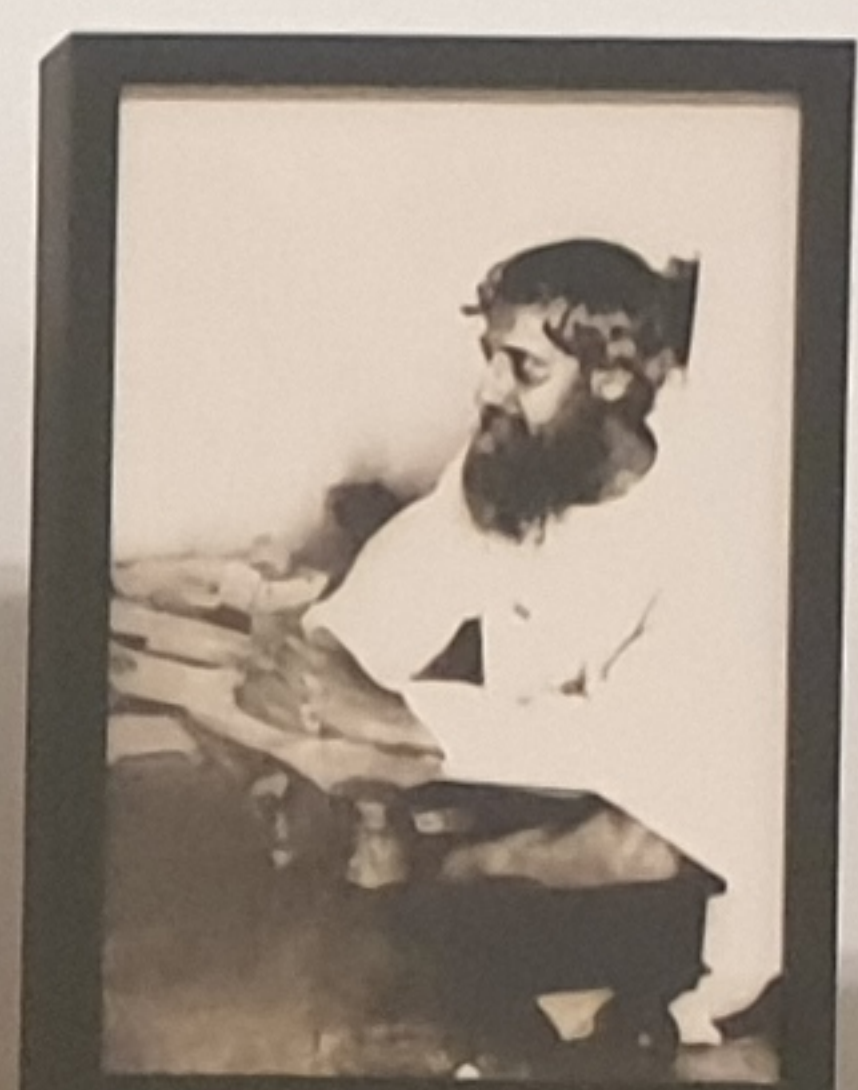
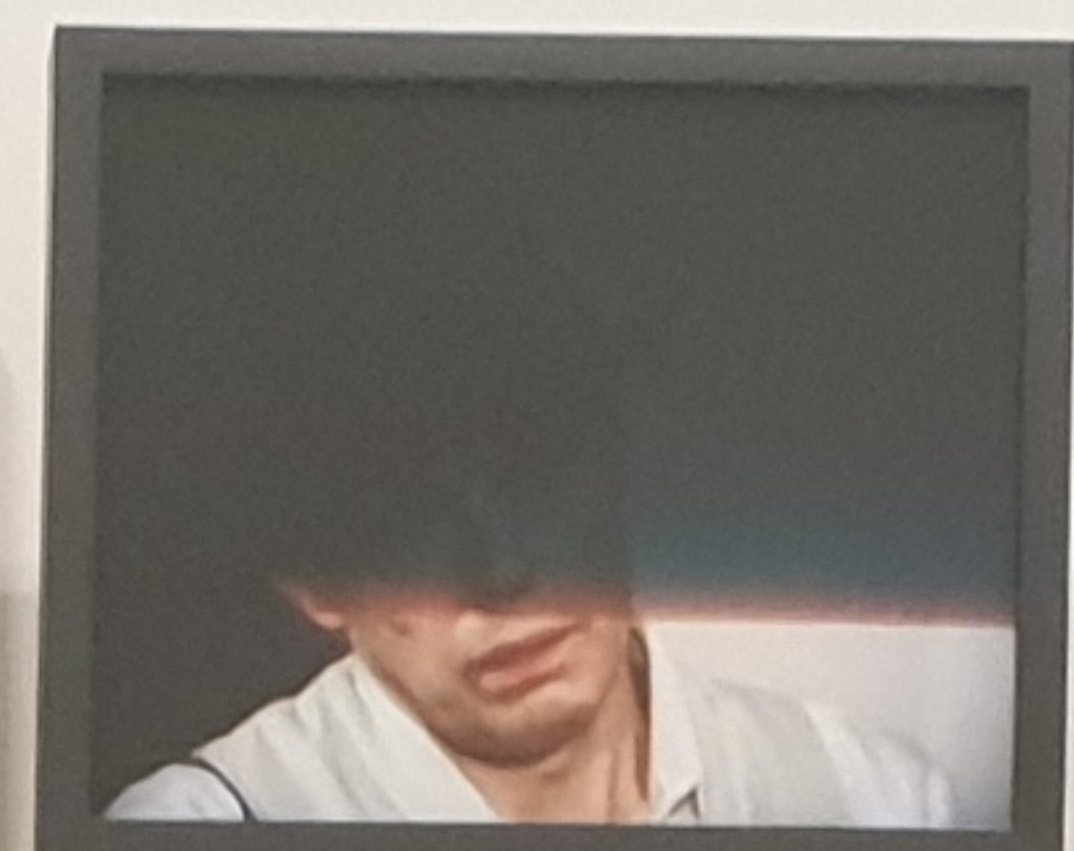
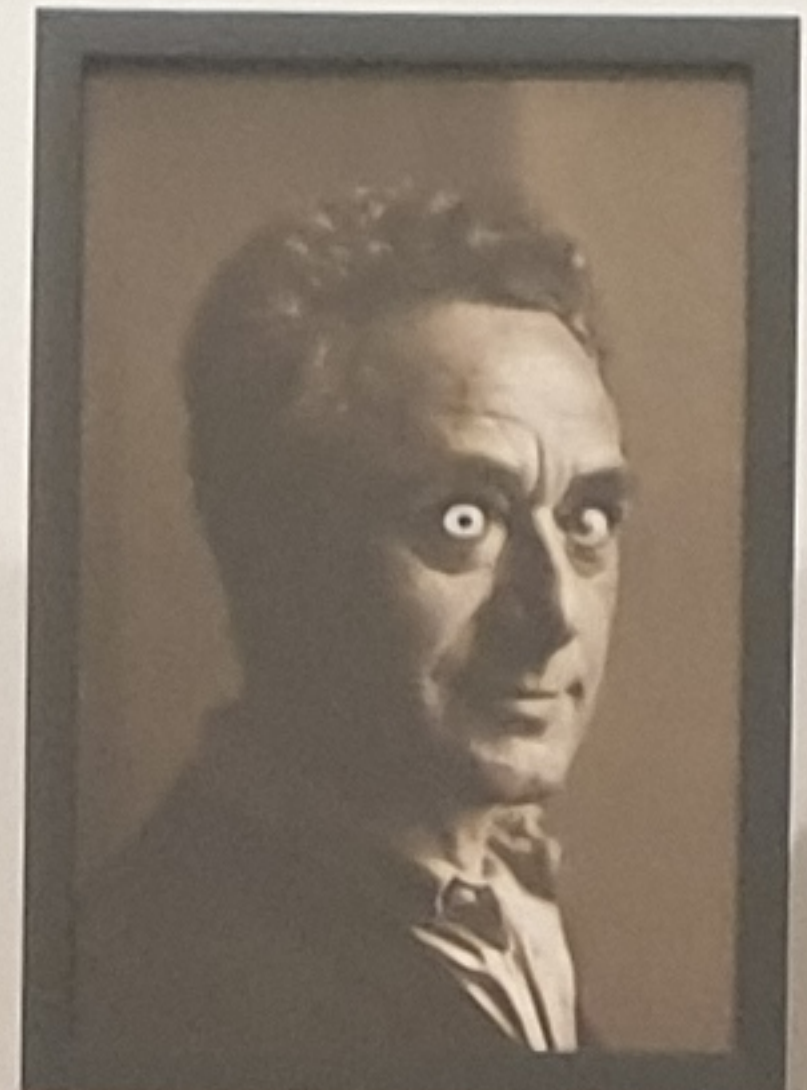
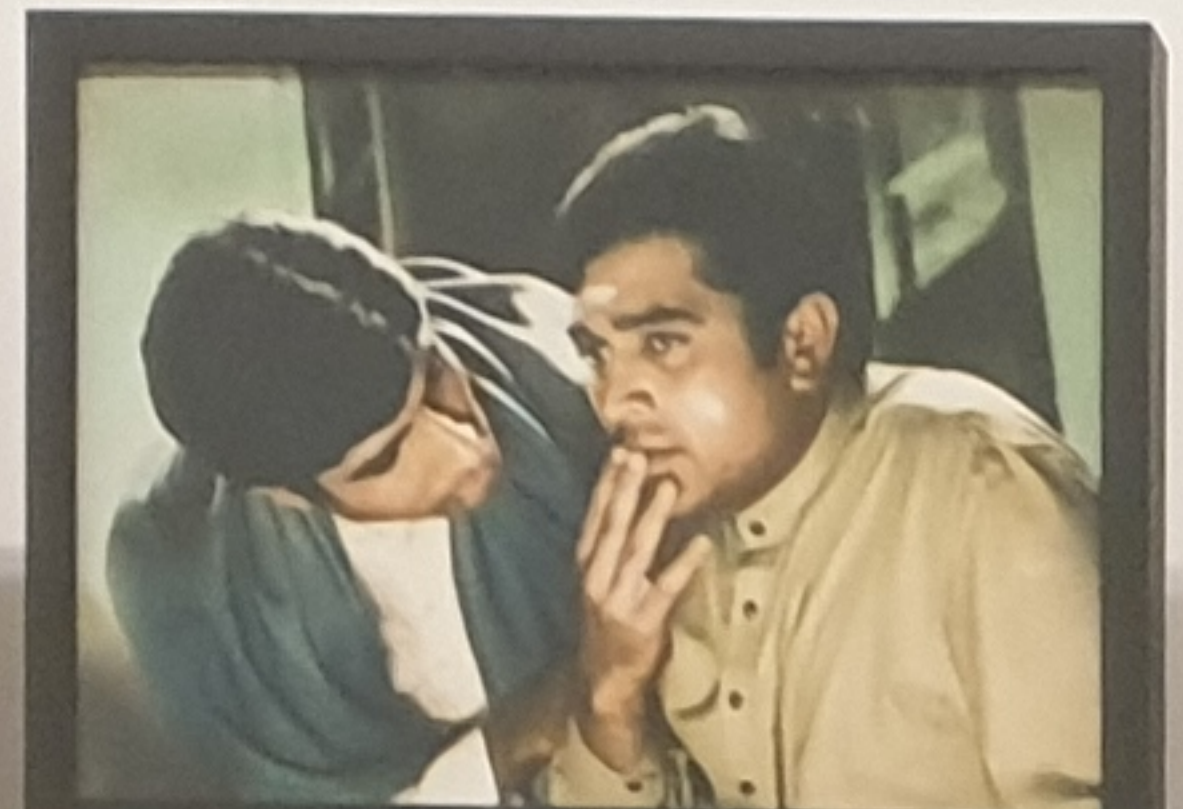
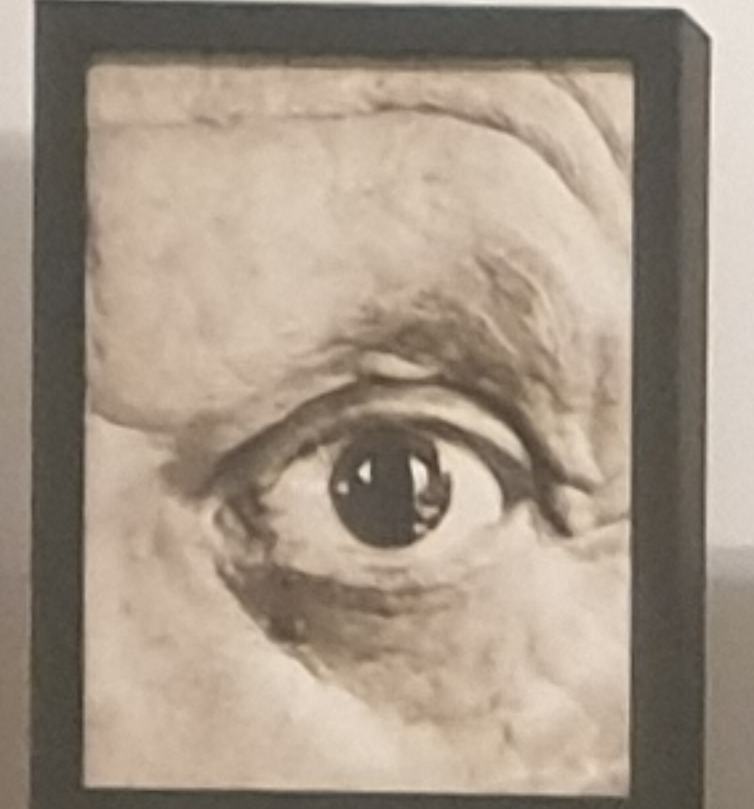
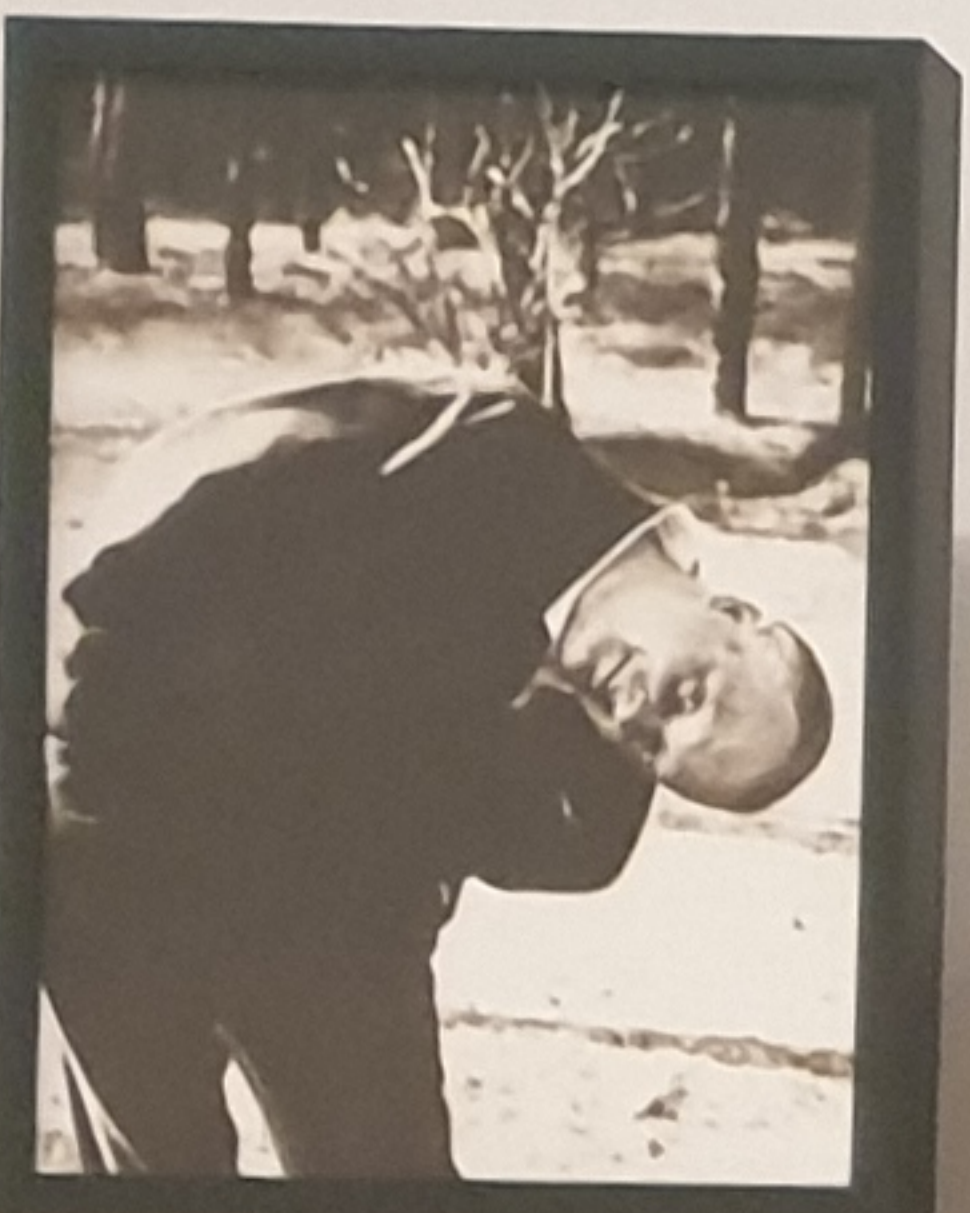




Paul Gauguin, 1891-1892
The Woman of Tahiti
Oil on canvas
1891-1892
The painting depicts a woman lying on a bed, wearing a light blue dress. She is lying on her side, facing right, with her head resting on a white pillow. Her arms are raised above her head. The bed has white linens. The painting is set within a dark wooden frame with a textured, cork-like inner border.







do not seek to be of my epoch;
seek to overflow my epoch.
André Gide

GARUDASANA

to be an artist,
you have to give up
everything,
including the desire
to be a good artist.